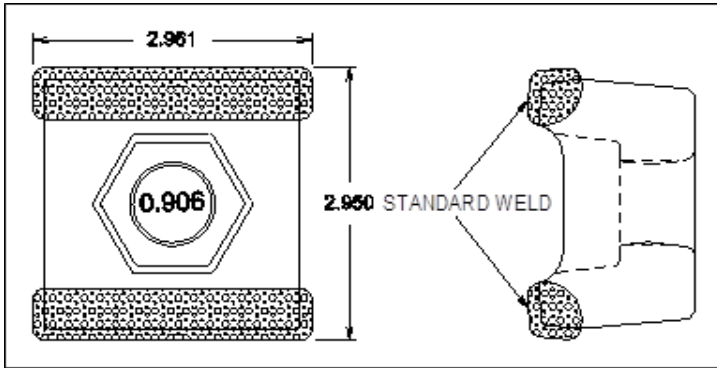
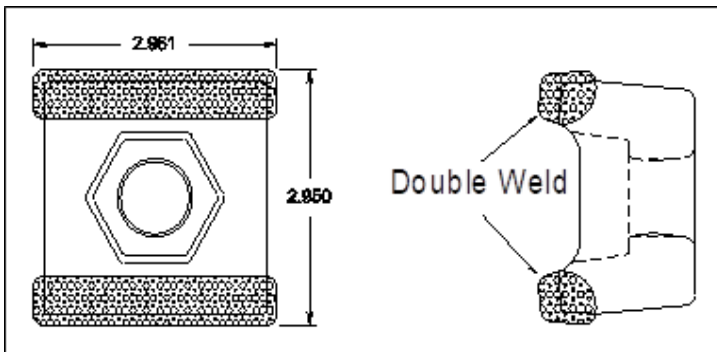


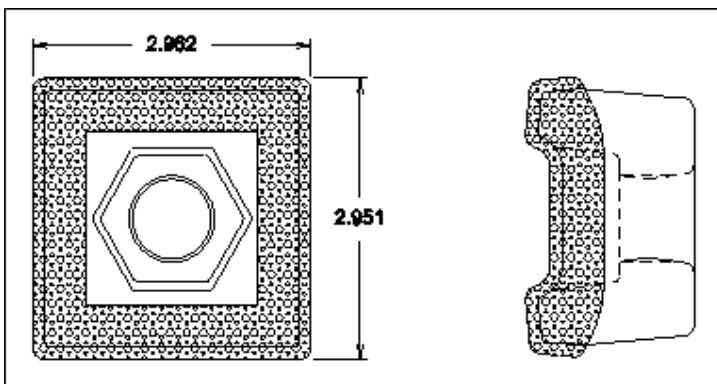
Grinder Tips



E-8 Weld: Top, Bottom, Standard Face welds and 4-Corner welds.



E-MX Weld: Top, Bottom, Double Face welds and 4-Corner welds.



Standard 8 or 12 Weld: Top, Bottom, Standard Face Weld & Full Side Weld.

Product Range

Raw Forging	E-8 Weld	E-MX8 Weld	8 / 12-Weld	Description - Raw Forging Dimensions
0065-0000B	E065-0008	E065-MX08	0065-0008	3" X 3" Single 7/8" hole, flat-back
0098-0000B	E090-0008	E098-MX08	0098-0012	2.75" X 4.75" double 3/4" holes, flat-back
0321-M000B	E321-0008	E321-MX08	0321-0012	3" X 3.75" single hole, 2.04" saddleback
0322-M000B	E322-0008	E322-MX08	0322-0012	3" X 3.75" single hole, 1.92" saddleback
0375-0000B	E375-0008	E375-MX08	0375-0012	2.75" X 4.75" double 3/4" holes, 2.04" saddleback
0471-M000B	E471-0008	E471-MX08	0471-0012	1.75" X 3.25" double 5/8" holes, 1.29" saddleback
0630-M000B	E630-0008	E630-MX08	0630-0012	3" X 3.75" single 7/8" hole, 1.92" saddleback
0878-0000B	N/A	0878-MX08	0878-0008	2.5" X 2.5" single 5/8" hole flat back
0879-M000B	N/A	0879-MX08	0879-0008	2.5" X 2.5" single 3/4" hole flat back
0352-H000B	E352-0008	E352-MX08	H352-0012	2.63" X 3.37" double 3/4" holes, flat back
0365-0000B	E365-0008	E365-MX08	0365-0008	2.75" X 2.75" single 7/8" hole, flat back
1832-0000B	E1832-0008	E1832-MX08	1832-0012	3.50" X 6.15" double 7/8" holes, 2.54" saddleback
1894-0000B	E1894-0008	E1894-MX08	1894-0012	3.00" C 6.15" double 7/8" holes, 2.29" saddleback
H090-0000B	E090-0008	E090-MX08	H090-0012	3.25" X 5.00" double 7/8" holes, flat-back
HD90-0000B	EHD90-0008	EHD90-MX08	HD90-0012	3.50" X 5.00" double 7/8" holes, flat-back